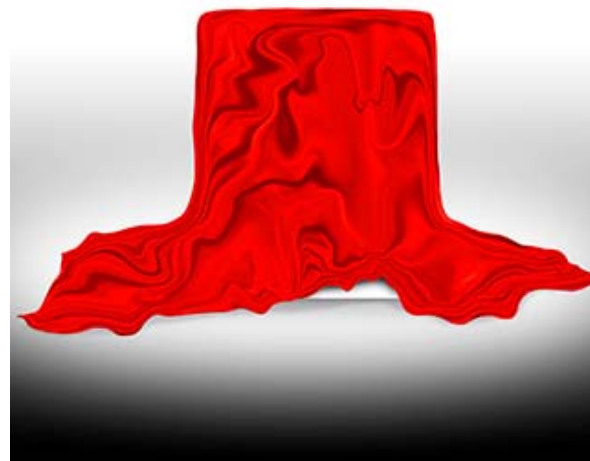




At Tyco we're always looking to the future, considering what's next? How can we make our products more sophisticated, offer more to our customers and improve protection of their assets and people.

We're constantly exploring new ways to modernize design, develop and change our systems to ensure we continue to meet our customer's needs. But what if we were able to develop something that is built to evolve, change and adapt alongside our customer's needs?

As part of the award winning ZETTLER PROFILE panel range, we have developed a complete fire detection and control system which is built to change, adapt and evolve.



The new PROFILE Flexible fire control panels with MZX technology have been specifically engineered to advance as our customers' needs change - a true expandable system which can be enhanced to adapt as your site develops.

We understand that technology never stands still and inevitably neither do the needs of our customers.

ZETTLER's PROFILE Flexible panels offer future proof fire detection and control technology with a new level of flexibility:

- The modular design and availability of slot cards means that the system can be tailored to the exact needs of the application, and as this evolves so can the system.
- Increased power – with more capacity per loop, more devices can be added.
- Shared power loops give improved efficiency. With power shared across loops the system can be designed to match the buildings layout and the loop capacity used is optimized.

Want to know more?

[Contact us](#) to receive the latest information on PROFILE Flexible, our upcoming events and industry news.